



पाखर

3BHK SPACIOUS NESTS

LIVE YOUR DREAM





SPREAD YOUR
Wings

BECAUSE LOVE NEEDS
Space
TO GROW...





Take Off

WITH A LABEL CRAFTING

Lifestyles

FOR MORE THAN TWO DECADES



The Nest Constructions is a registered partnership firm in the year 1996 . Mr. Charudatta D. Joshi, a qualified engineer is the managing partner. The firm conducts its business as a Promoter, Developer and Builder in the field of real estate development. Mr. Joshi also entrusted responsibility as a “Secretary” of Marathi Bandhkam Vyavasayik Associations (MBVA) having 300 builders/developers as a members.

In the last 28 years, the firm has provided quality homes to 600 to 650 families in the sub-urban of Pune City. In addition to ownership residential flat constructions, the Nest Constructions has successfully completed industrial, commercial, special structure projects in and around Pune.

40+ Completed Projects | 6 Ongoing Projects | 8 Upcoming Projects

CREDITS

ARCHITECT
A DESIGN STUDIO

RCC CONSULTANT
JRCC CONSULTANTS

LEGAL CONSULTANT
ADV. DILIP ATHAVALE

CA DINESH GANDHI





The image features decorative line art of flowers in the corners. In the top right, there is a stylized flower with long, flowing petals. In the bottom left and bottom right, there are more stylized flowers with multiple petals, some with long, thin leaves extending from them. The lines are thin and elegant, creating a delicate, artistic feel.

Soar

WITH A

LIFE NOTHING LESS THAN

Extraordinary



PRESENTING



पाखर

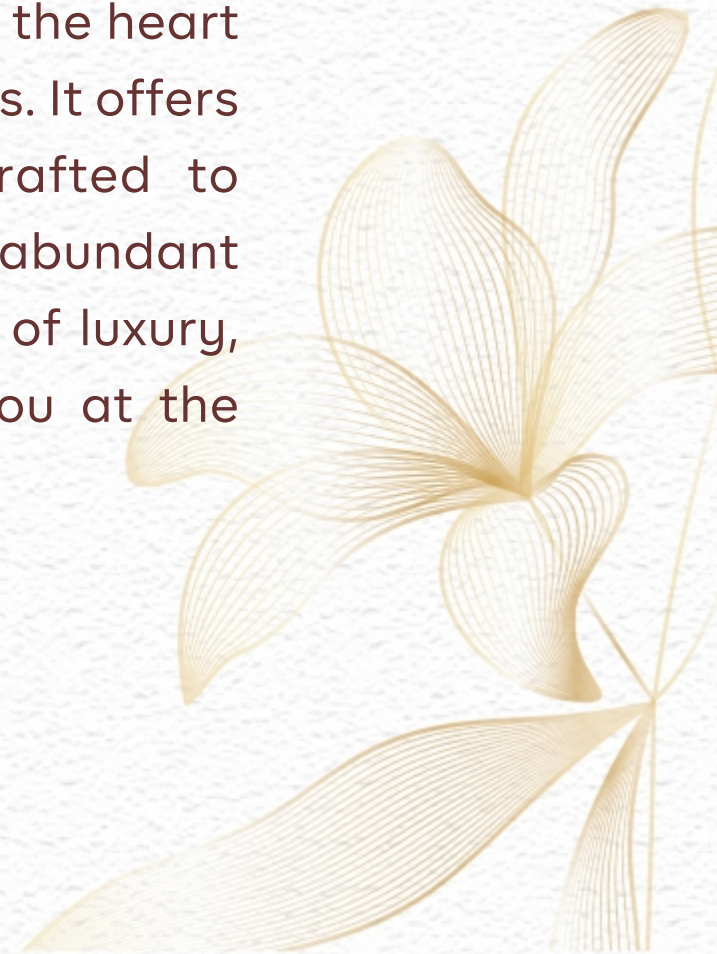
3BHK SPACIOUS NESTS

पाखर वास्तू विषयी...
क्षितिज इथले जणू दाही दिशांची चादर...
नभात सुंदर पाखरांची भिरभिर...
उगवतीला सोबत मित्र भास्कर...
तिन्ही सांजेला हळूच शीतल चंद्राची नजर...
रात्रीस असे नभी सुंदर तारांगण...
नभ दाटून येता पाऊस झालर...
चातक उंबरा त्यास मनी आप्त ओढ
आतिथ्य सदा तृप्त पाहुणचार...
लक्ष्मी वसे वरदान दोन्ही कर,
समाधान नांदते येथे चरा चर...
कधी मन होते कावरे, अधीर सैर भैर,
तेव्हा वास्तू पांघरते प्रेमानेमायेची पाखर...

-प्रसाद भदे

Ascend TO A TIMELESS Masterpiece

A thoughtfully designed premium residential project nestled in the heart of Navi Peth. Pakhar features 12 exclusive 3 BHK Spacious Nests. It offers unparalleled privacy and spaciousness. Each home is crafted to perfection with a unique three-side-open design, ensuring abundant natural light, and ventilation. Experience a harmonious blend of luxury, comfort, and convenience in a neighborhood that places you at the epicenter of culture and connectivity.





artistic impression





Lift Off TO THE Remarkable

3 BHK Spacious Nests



7 Storey Project



Smart & Comfortable Layout



Scenic Balcony Views



High-end Facilities






The background features delicate, golden-brown line art of stylized flowers and leaves in the corners. In the top right, a flower with long, slender petals is partially visible. In the bottom left and bottom right, there are larger, more complex floral designs with multiple layers of petals and long, pointed leaves.

Cruise

INTO A WORLD OF

Possibilities





Elevate TO AN ICONIC Address

Located in the heart of Pune, Navi Peth offers easy access to major roads, business hubs, shopping centers, and top schools. With its mix of cultural heritage and modern amenities, it's the ideal place for those seeking a vibrant yet peaceful neighborhood. Navi Peth ensures excellent connectivity and a thriving community for a well-rounded lifestyle.

Central Location



Cultural Heritage and Modern Amenities



Excellent Connectivity





Lively Yet Peaceful







Drift INTO EXQUISITE Comforts

- Two car parking spaces
 - Landscaped Roof-top garden with serving counter.
 - Single point, access control System
 - Designer made entrance Lobby.
 - Auto-Door, 8 passenger elevator.
 - Power Back Up to the Lift, Common Lighting in parking and lobbies.
 - Double coat external sand faced plaster
 - Water resistant & durable external paint
 - Fire fighting system
 - Borewell with a separate tank.
 - CCTV surveillance at Ground level.
 - Letter Boxes at parking level.
 - Decorative compound wall
 - Common Toilet at ground floor.
 - Rainwater harvesting system
 - Solar Water heater system
- 
- 



Stream INTO THE Luxury OF DETAILS

SPECIFICATIONS

R.C.C. Structure as per I.S. Codes

Internal Walls :

- Walls in A.A.C. blocks.
- Gypsum finish plaster for walls and ceiling.
- Plastic Emulsion Paint for walls.

Flooring:

- 800 x 800 Vitrified Tiles of a Reputed brand.
- Matt Finish tiles in Toilets and Balconies.

Toilets:

- Designer crafted Tile Patterns.
- Single Level Diverter with Overhead Shower, Spout and Basin Mixer.
- Hand- Shower in Master Toilet.
- Branded company Sanitary ware- Basins and Water Closet with Soft Close Seat Cover.
- Granite Counter for Basin.

Kitchen:

- Two Granite Kitchen Platforms. (Main & Service)
- S.S. Sink

Doors:

- Safety door with designer grill.
- Main Door with Night Latch, Tower Bolt and Handle.
- All other Flush doors having Laminate finish.
- Laminated door frames for all other doors.
- Granite frames for Toilet Doors.

Windows:

- UPVC Windows with Mosquito Net.
- M.S. Safety Grills.
- Granite Window Sills.

Hall Balcony:

- Toughened Glass railings with film.

Electrical:

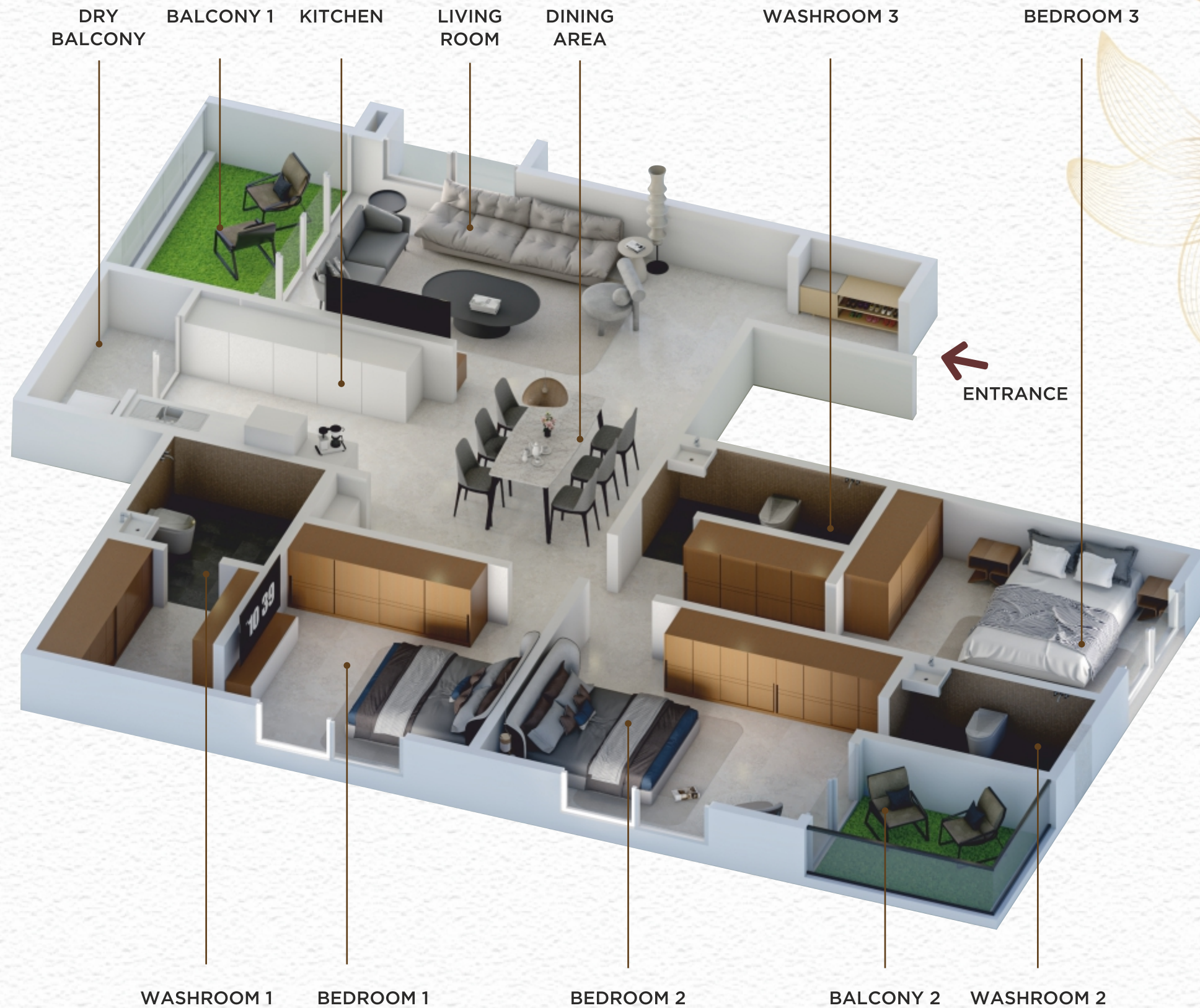
- Branded company Concealed Copper Wiring and Switch Boards.
- Wiring to cover One Light point, One Fan point and One 5A point in every room.
- Points for Refrigerator, Microwave, Water Purifier, Chimney Hob, Mixer and Washing Machine in Kitchen and Dry Balcony.



ISOMETRIC VIEW



ISOMETRIC VIEW





3BHK **Spacious Nests**

201, 301, 401 & 601

FLAT CARPET AREA

123.46 Sq.mt.

BALCONY AREA

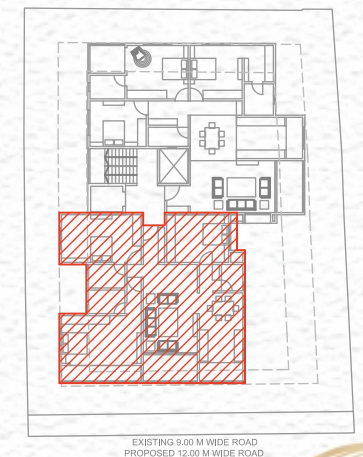
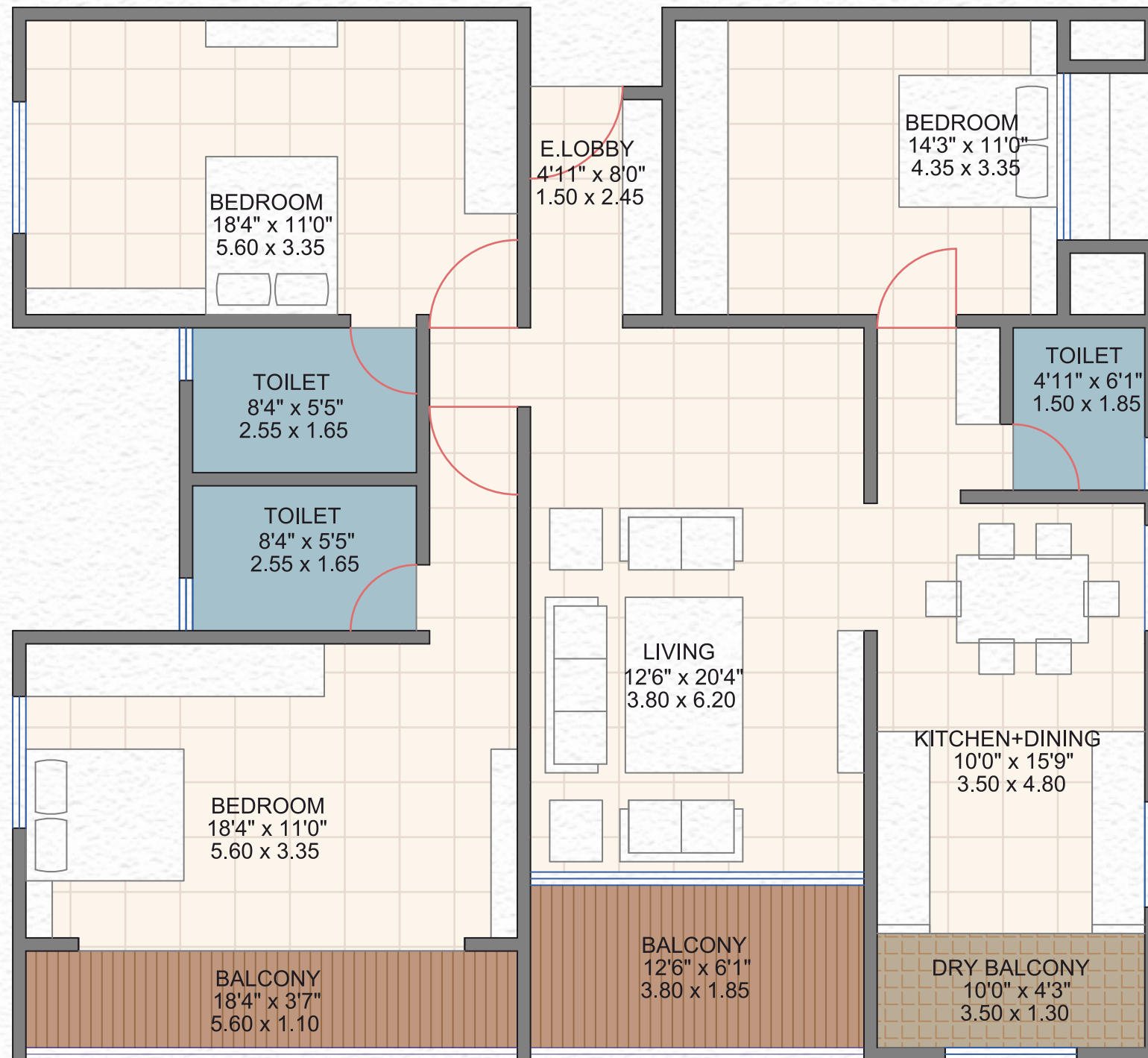
13.19 Sq.mt.

TOTAL CARPET AREA

136.65 Sq.mt.

TOTAL CARPET AREA

1470.90 Sq.ft.



UNIT PLAN - TYPE A



3BHK **Spacious Nests**

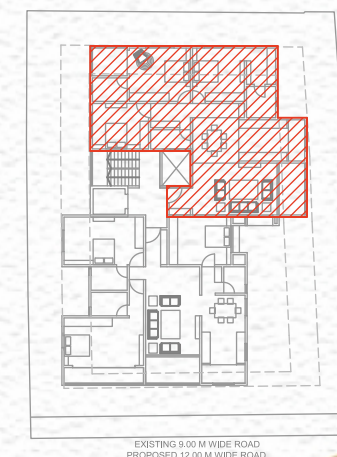
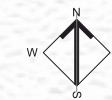
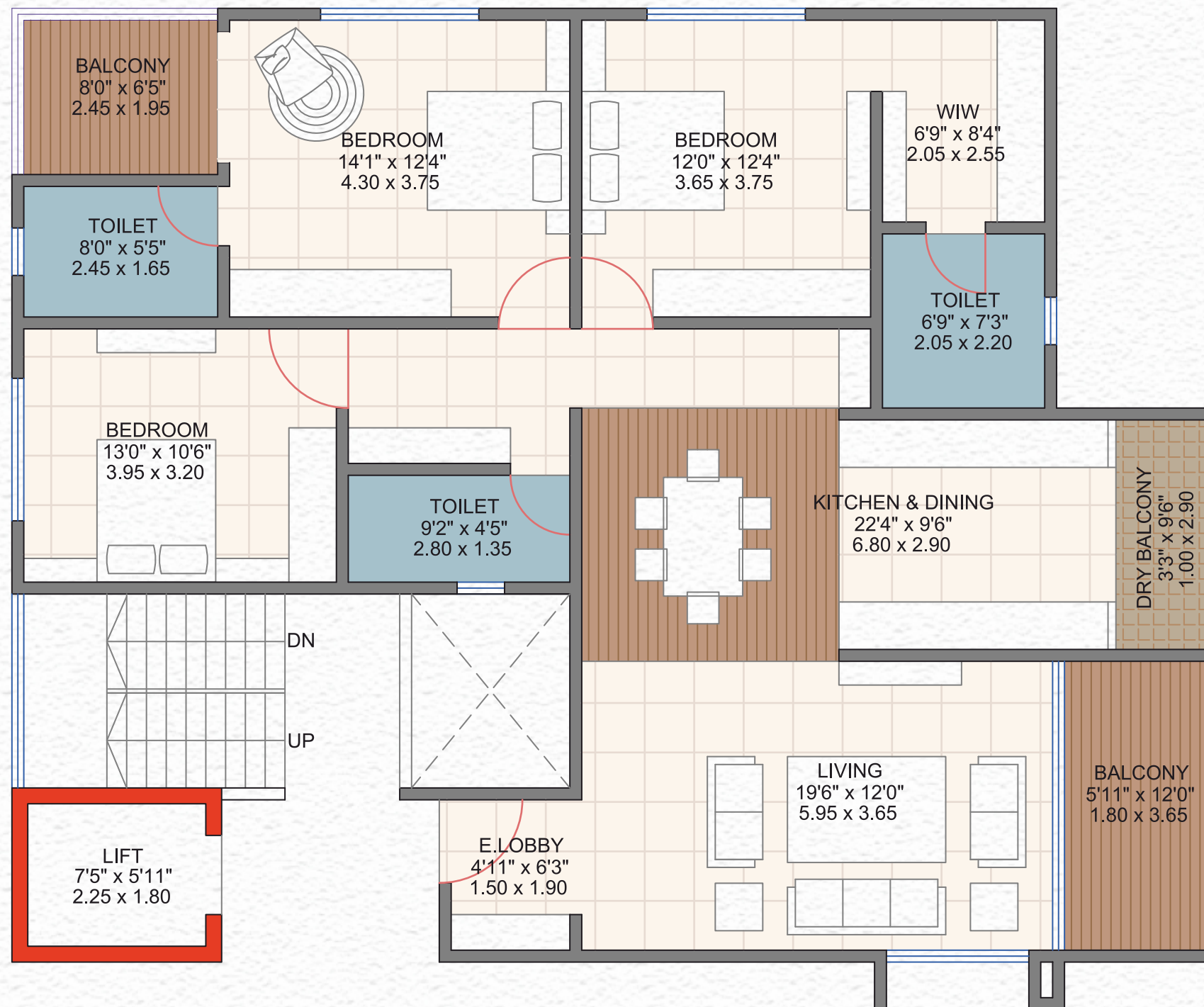
102, 202, 302, 402 & 602

FLAT CARPET AREA
124.95 Sq.mt.

BALCONY AREA
10.25 Sq.mt.

TOTAL CARPET AREA
135.20 Sq.mt.

TOTAL CARPET AREA
1455.29 Sq.ft.



UNIT PLAN - TYPE B

Completed Projects



VAIBHAVI
📍 Mayur Colony



SAI-SHILP
📍 Kukade Parisar, Pune



AMOD
📍 Pune



PASAYDAAN
📍 Pune



RAMMYA
📍 Karve Nagar, Pune



SAURABH
📍 Prabhat Road, Pune



FLAIR
📍 Karve Nagar, Pune



SAI SRUSHTI
📍 Kothrud, Pune



SAI SANKALPA
📍 Erandwane, Pune



PRASAD
📍 Ghole Road, Pune

Ongoing & Upcoming Projects



Swarupnalini 'A'

📍 Mayur Colony



Swarupnalini 'B'

📍 Mayur Colony



Chandrajyoti

📍 Pune



Ravikeshar

📍 Mayur Colony, Pune



Reshma Heights

📍 Dahanukar Colony, Pune



Anamay

📍 Pune





MahaRERA Registration No:

P52100080564

<https://maharera.maharashtra.gov.in/>



PROJECT BY



 **98508 99976**

SITE ADDRESS: Final Plot No. 989+990+991/41, S.No. 722/AB/41, CTS No. 103/157/32, TP Scheme 1, Laxmi Park, Sadashiv Peth (Navi Peth), Pune.

E-MAIL: office@nestconstructions.in

The content of this brochure are purely conceptual and have no legal binding on the Developer. Developer reserve all rights to amend floor plans, layout plans, number offlats/units, number offloors, building elevation, colour schemes, etc. without prior notice/ consent of the purchasers. In case a particular specification or amenity is not easily available or has been discontinued or has reports of malfunction or the Developer has any reservations as to its quality then in such a case, the Developer shall have a sole right to use any other brand or colour or specification or amenity which is similar to in usage to the agreed one

MEMBER OF

